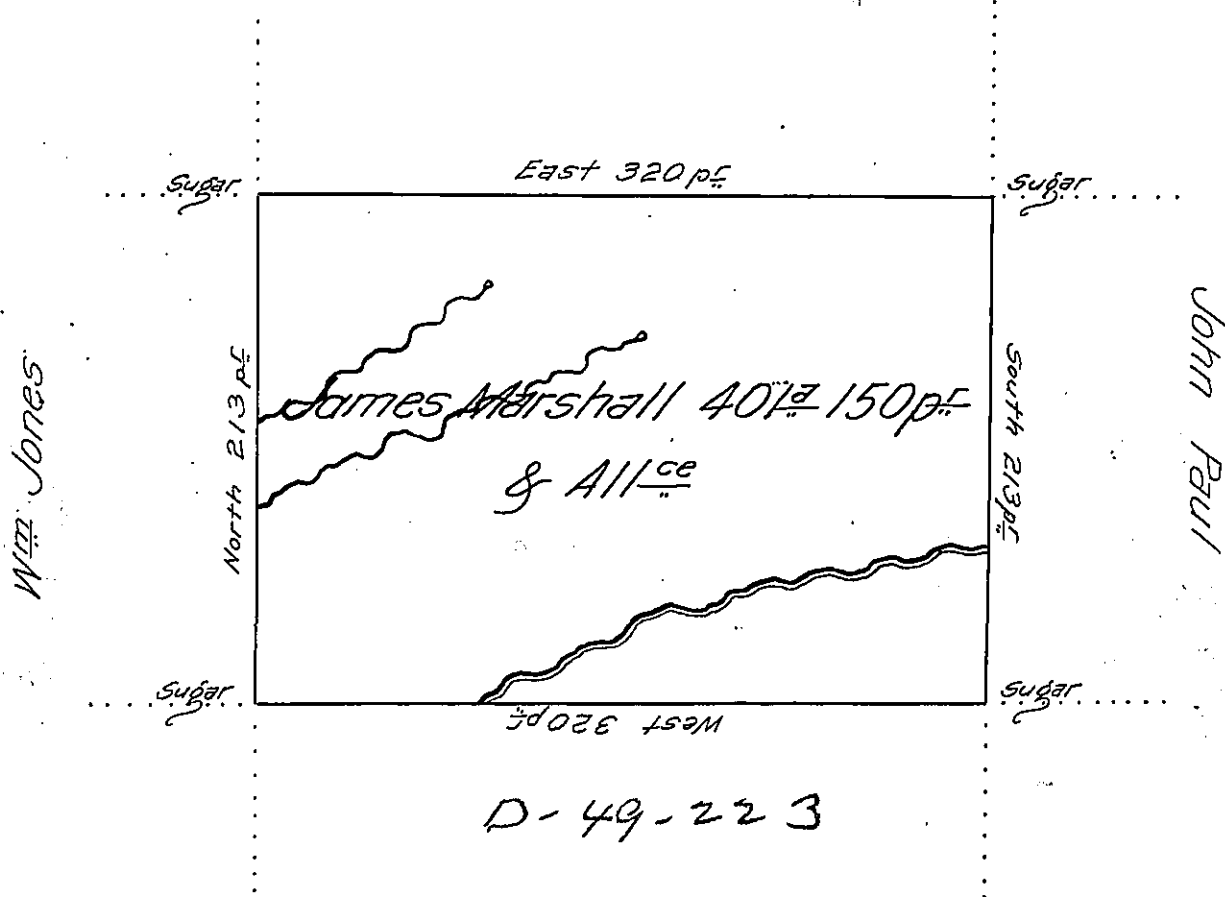


D-49-224

John Marshall



D-49-223

MICH: MARSHALL

Situate on the west side of French Creek in Allegheny County Containing 401 Acres and 150 p<sup>f</sup> and allowance of six  $\frac{1}{2}$  Cent for Roads &<sup>r</sup> Surveyed the 6<sup>th</sup> day of November 1794. In pursuance of his Improvement bearing date the 5<sup>th</sup> day of November 1794.

To Daniel Brodhead Esq<sup>r</sup> }  
 Surveyor General — }

W<sup>m</sup> Power D<sup>y</sup> Sr

IN TESTIMONY that the above is a copy of the original remaining on file in the Department of Internal Affairs of Pennsylvania, made conformably to an Act of Assembly approved the 16th day of February, 1833, I have hereunto set my Hand and caused the Seal of said Department to be affixed at Harrisburg, this thirtieth day of June 1906.

*Seacord Power*  
 Secretary of Internal Affairs.